

Certificate SGS-PEFC/COC-1188

The organisation

# Solarlux GmbH

Gewerbepark 9-11, 49143 Bissendorf, Germany

has been assessed and certified as meeting the requirements of the standard

## PEFC - Chain of Custody

PEFC ST 2002:2013 – “Chain of Custody of Forest Based Products – Requirements” - dated 24/05/2013  
PEFC ST 2001:2008, Second Edition – “PEFC Logo Usage Rules – Requirements” – dated 26/11/2010  
as amended and published on [www.pefc.org](http://www.pefc.org)

This certification includes the following products

**The scope of registration appears on page 2 of this certificate**

This certificate is valid from 30 September 2016 until 11 October 2020  
and remains valid subject to satisfactory surveillance audits  
Recertification audit due before 1 October 2020  
Issue 4. Certified since October 2010  
SGS Ref # DE13/81840376

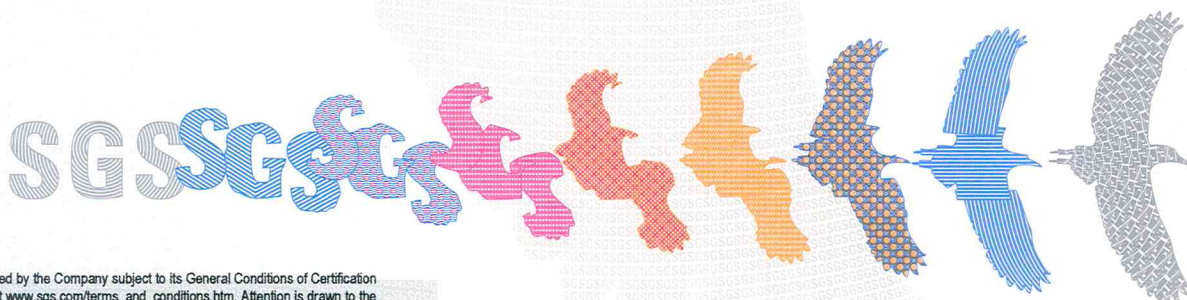
This is a multi-site certification  
Additional site details are listed on the subsequent page

Authorised by

SGS Société Générale de Surveillance SA Systems & Services Certification  
Technoparkstrasse 1 8005 Zurich Switzerland  
t +41 (0)44 445-16-80 f +41 (0)44 445-16-88 [www.ch.sgs.com](http://www.ch.sgs.com)

Organisations with a valid PEFC chain of custody certificate can only use the PEFC Logo with unique PEFC license logo number based on PEFC Logo usage license contract issued by the PEFC Council or another entity authorised by the PEFC Council and in accordance with the PEFC logo usage rules.

Page 1 of 2



# Solarlux GmbH

## PEFC - Chain of Custody

Issue 4

This certification includes the following products

**Einkauf von PEFC zertifizierten lamellierten Fensterkanteln. Herstellung und Vertrieb von PEFC zertifizierten Glasfaltwänden, Wintergärten und Terrassendächern nach der Methode der physischen Trennung.**  
**Purchase of PEFC certified laminated window scantlings. Manufacturing of PEFC certified glazed folding doors, conservatories and canopies from the physical separation method based on the Chain of Custody standard.**

Additional facilities

**Solarlux GmbH**  
Industriepark 1, 49324 Melle, Germany

